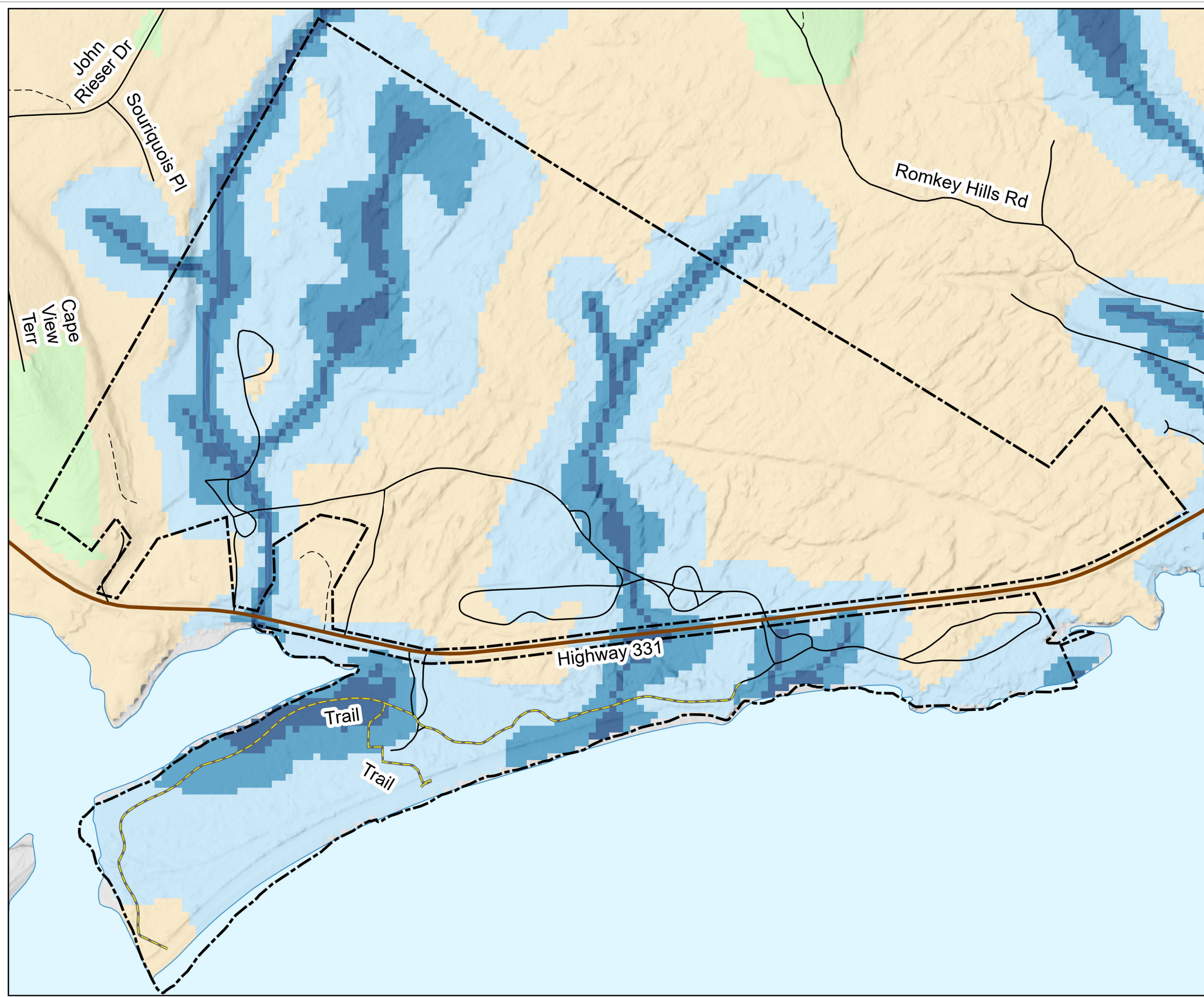
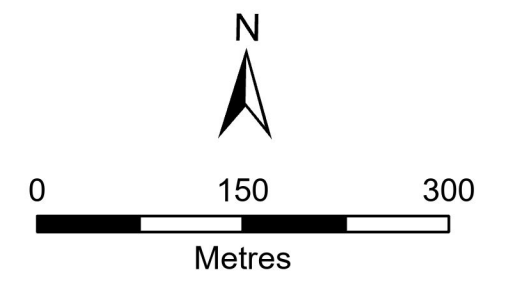


Depth to Water Table

Rissers Beach Provincial Park



- | | |
|--------------------|-----------------|
| County Boundary | Provincial Park |
| Trans Canada | 0 - 0.10 m |
| Arterial Highway | 0.11 - 0.50 m |
| Trunk Highway | 0.51 - 2 m |
| Collector Highway | 2.01 - 10 m |
| Road (Other) | > 10 m |
| Track (2m & wider) | |
| Trail / Footpath | |



6° Universal Transverse Mercator (UTM) Projection, Zone 20,
Central Meridian 63°00' West, North American Datum (NAD) 1983.

Data Sources:

Nova Scotia Road Network, Nova Scotia Topographic Database:
Service Nova Scotia and Internal Services

Capability Analysis:

Ecological Land Classification (ELC) - Ecosession, Forest Cover Type,
Forest Ecosystem Classification (FEC) - Soil Type, Non-Forested, Old Growth Forest,
Surficial Geology, Wet Areas Mapping (WAM), Wetlands, Wetlands of Special Significance, Slope



Produced by: Department of Natural Resources and Renewables - Parks and Recreation, 2024.
The Province of Nova Scotia accepts no liability for any errors, deficiencies, or faults on this map.
Date of map is not indicative of data currency.